

Tuesday, June 27, 2017

To: Urban families – Yorkton and Melville

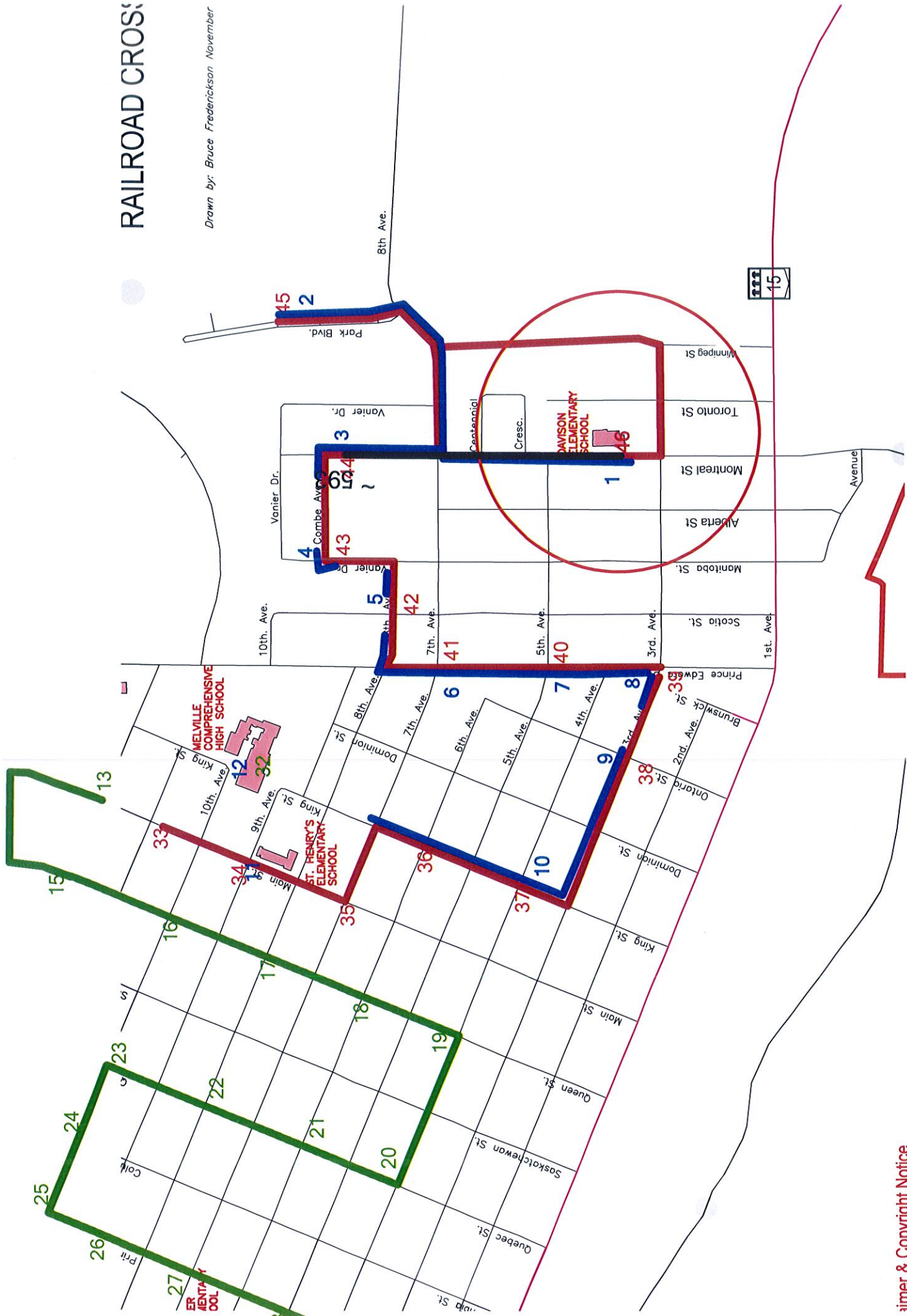
In January 2017 the Board of Education undertook a review of their Transportation Policy. In an effort to provide consistency and equity in transportation of students across the division, the board, in cooperation with Christ the Teacher Catholic School Division, agreed to develop a walk zone around all schools within Yorkton and Melville. These walk zones were adopted in an effort to encourage healthy lifestyles, increase activity for students, and to allow for enough capacity on the buses to accommodate those students outside the walk zone to get to school. Board Policy 16 - Transportation was approved by the board at their May 2017 meeting.

Urban bus services will remain in effect for elementary students who live more than 300 metres from their school of attendance, and for high school students who live more than 500 metres from their school of attendance. (Students attending either the Melville Comp or Yorkton Regional High School are considered high school students). A map showing the walk zones accompanies this letter for your reference.

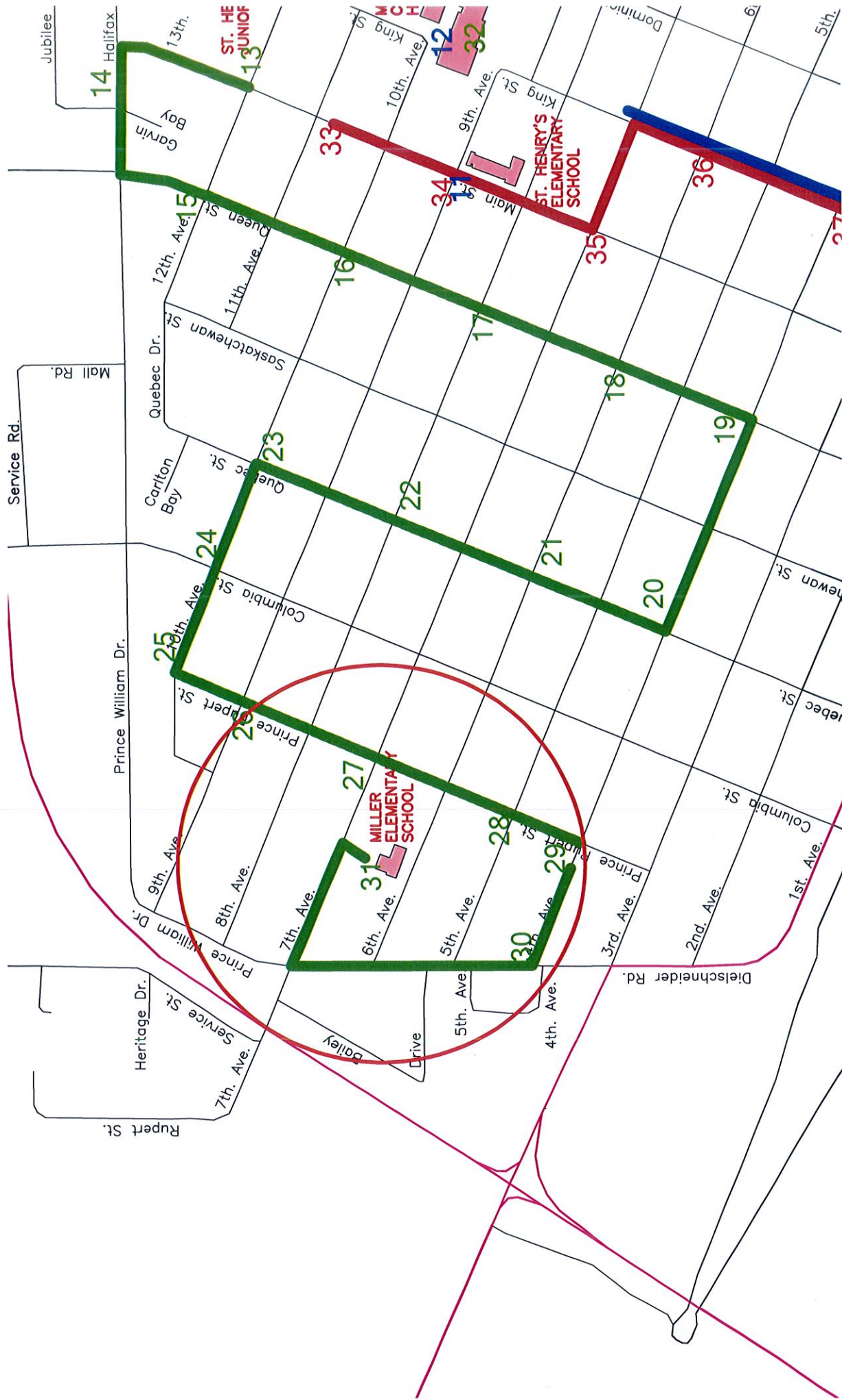
The urban bus routes will be reviewed and updated in August, and will be posted on the GSSD website. For further information please contact the Transportation Department at 306-786-5505.

## RAILROAD CROSSING

Drawn by: Bruce Frederickson November



## Similar & Copyright Notice





PR  
STF  
SCI  
RAI

Drawn

